

# MIA Meeting

17 October 2012

KAISER PERMANENTE

POTRERO HILL MOB & GARAGE

KMD ARCHITECTS

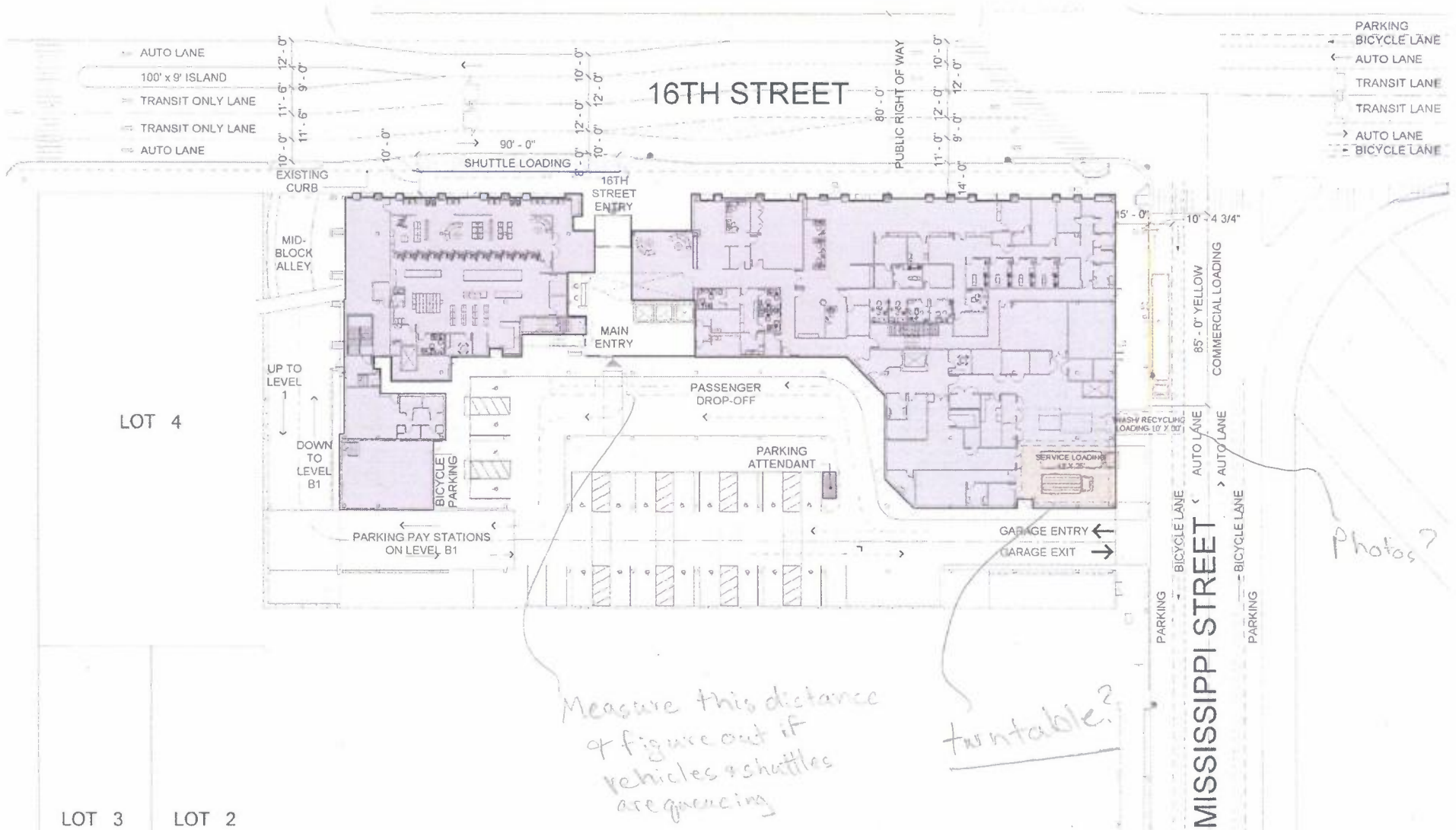
# Agenda

- **Review Site Plan**
  - **16<sup>th</sup> Street with TEP improvements**
  - **Vehicular circulation**
  - **Parking and Shuttle Loading**
  - **Curb Cuts**
- **Review Loading Dock Studies**
- **Review Sidewalk Improvements 16<sup>th</sup> and Mississippi**

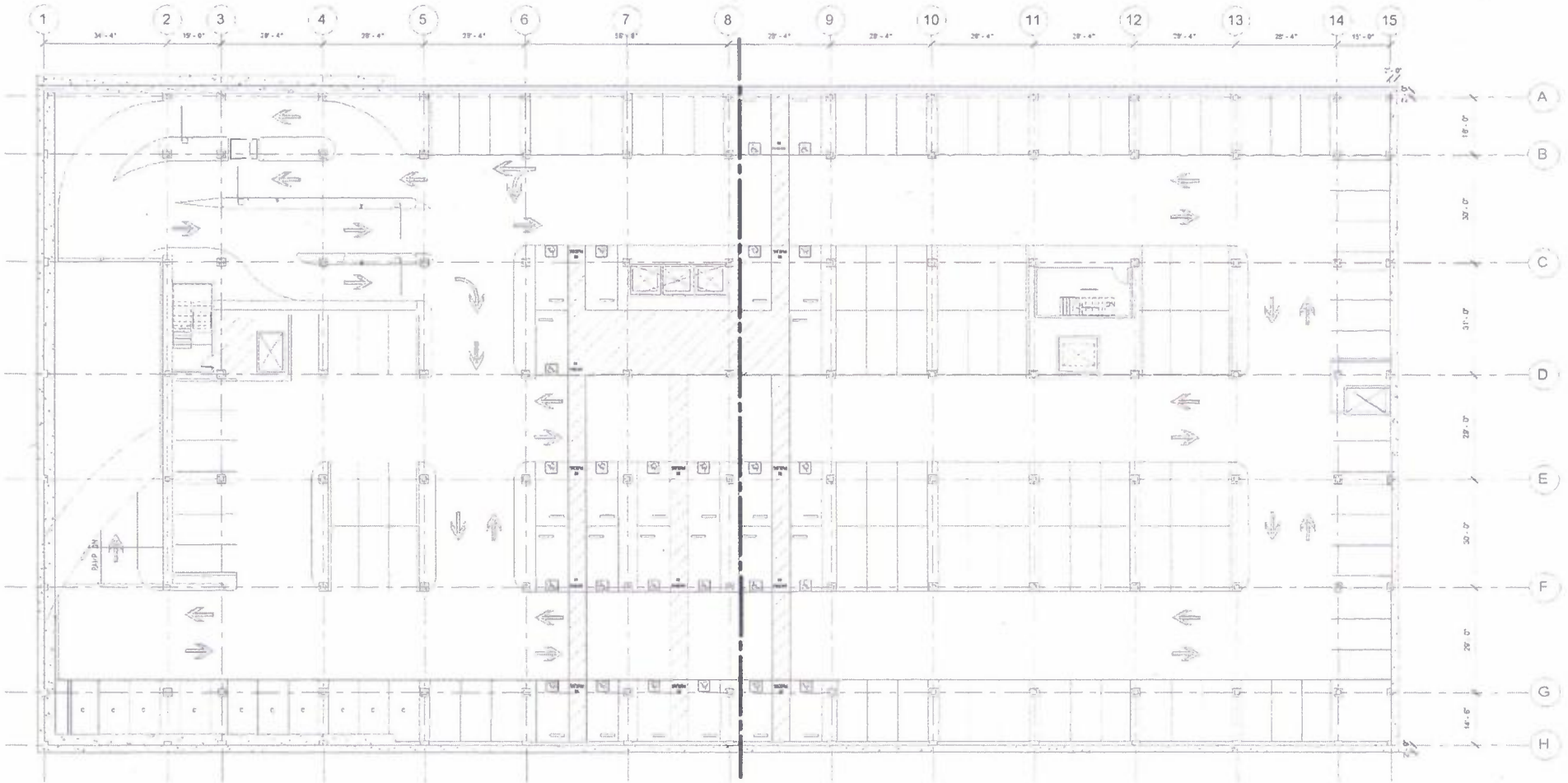




# Site Plan



# Below Grade Parking Level B1



# Potrero Hill MOB Loading Assumptions

Kaiser Permanente  
Proposed Truck Delivery  
Typical Week

|           | Total Trucks | Draft Delivery Assumptions |     |     |     |     |         |           |         |          |          |        |     |               |           |
|-----------|--------------|----------------------------|-----|-----|-----|-----|---------|-----------|---------|----------|----------|--------|-----|---------------|-----------|
|           |              | Commercial (X)             |     |     |     |     |         |           |         |          |          |        |     | Waste (Y)     |           |
| Monday    | 14           | USPS                       | Lab | Lab | Lab | Lab | Food    | Materials | Optical | Pharmacy | Pharmacy | Brinks | UPS | Trash         | Recycle   |
| Tuesday   | 14           | USPS                       | Lab | Lab | Lab | Lab | Linen   | Materials | Optical | Pharmacy | Pharmacy | Brinks | UPS | Medical Waste | Compost   |
| Wednesday | 14           | USPS                       | Lab | Lab | Lab | Lab | Praxair | Materials | Optical | Pharmacy | Pharmacy | Brinks | UPS | Trash         | Cardboard |
| Thursday  | 14           | USPS                       | Lab | Lab | Lab | Lab | Food    | Materials | Optical | Pharmacy | Pharmacy | Brinks | UPS | Medical Waste | Compost   |
| Friday    | 14           | USPS                       | Lab | Lab | Lab | Lab | Linen   | Materials | Optical | Pharmacy | Pharmacy | Brinks | UPS | Trash         | Recycle   |
| Weekly    | 70           |                            |     |     |     |     |         |           |         |          |          |        |     |               |           |

*Figure out different  
size of vehicles*

## Daily Deliveries and Pick Ups:

USPS – 1X day, weekdays

Laboratory – 4X day, weekdays (Lab specimens, specimen pack with hand truck)

Linen – 2X week, weekdays (Large, wheeled Linen carts – clean and soiled linen))

Livermore/Norcal Deliveries – 1x month on average, more often for moves, construction and special projects. (materials and equipment, pallets)

Materials – Daily, weekdays (Boxes, pallets)

Optical – Daily, weekdays (Boxes, Handtruck)

Praxair – 2X month (Compressed Gas, cart or hand truck)

Pharmacy – 2X day, weekdays (Boxes, Handtruck)

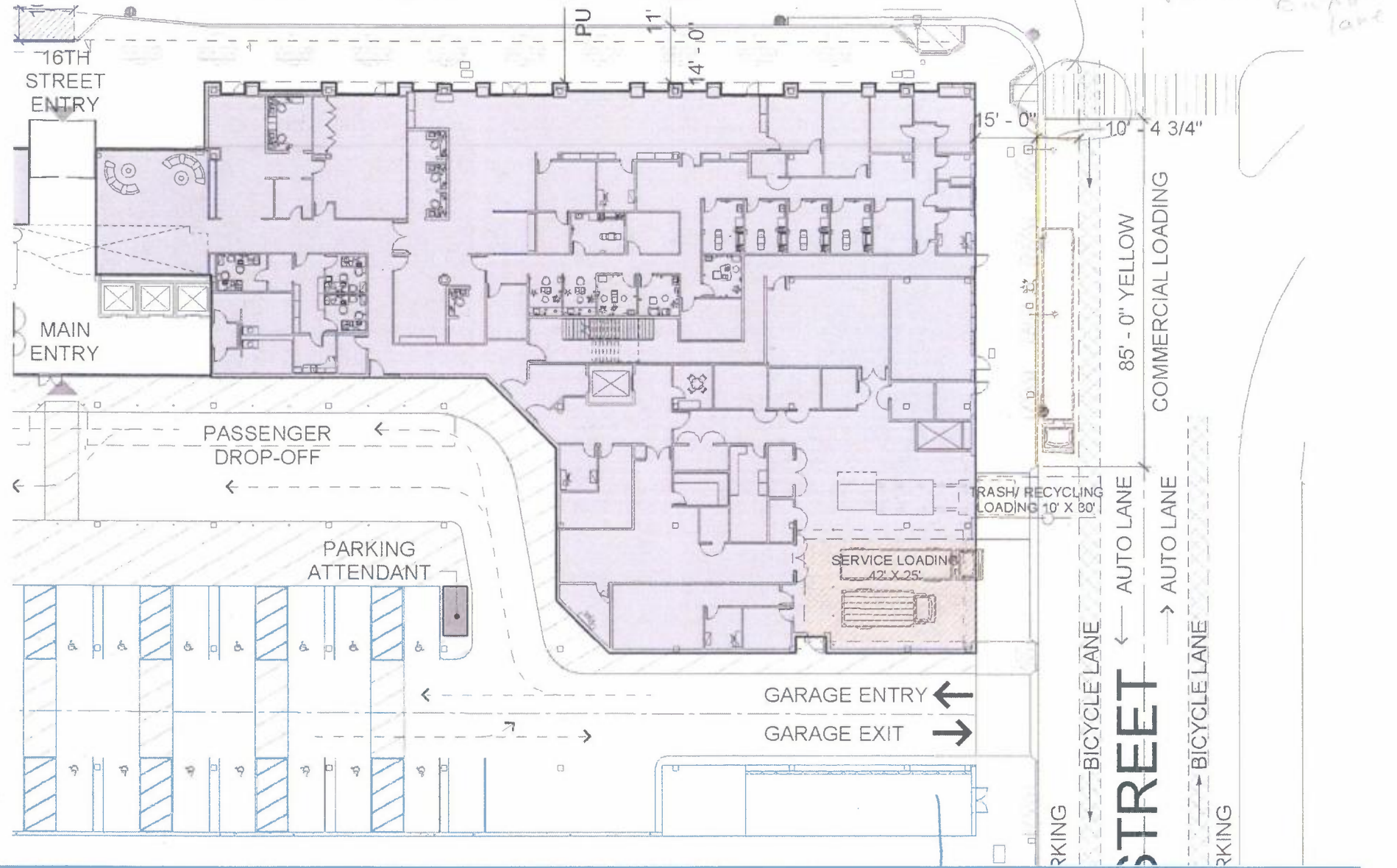
Brinks – 1X day, weekdays (Cash, carried by hand)

Food – Vending machines weekly, hot food as requested, weekdays (Boxes, Handtruck)

FedEx & UPS – 1X day, weekdays (Packages)

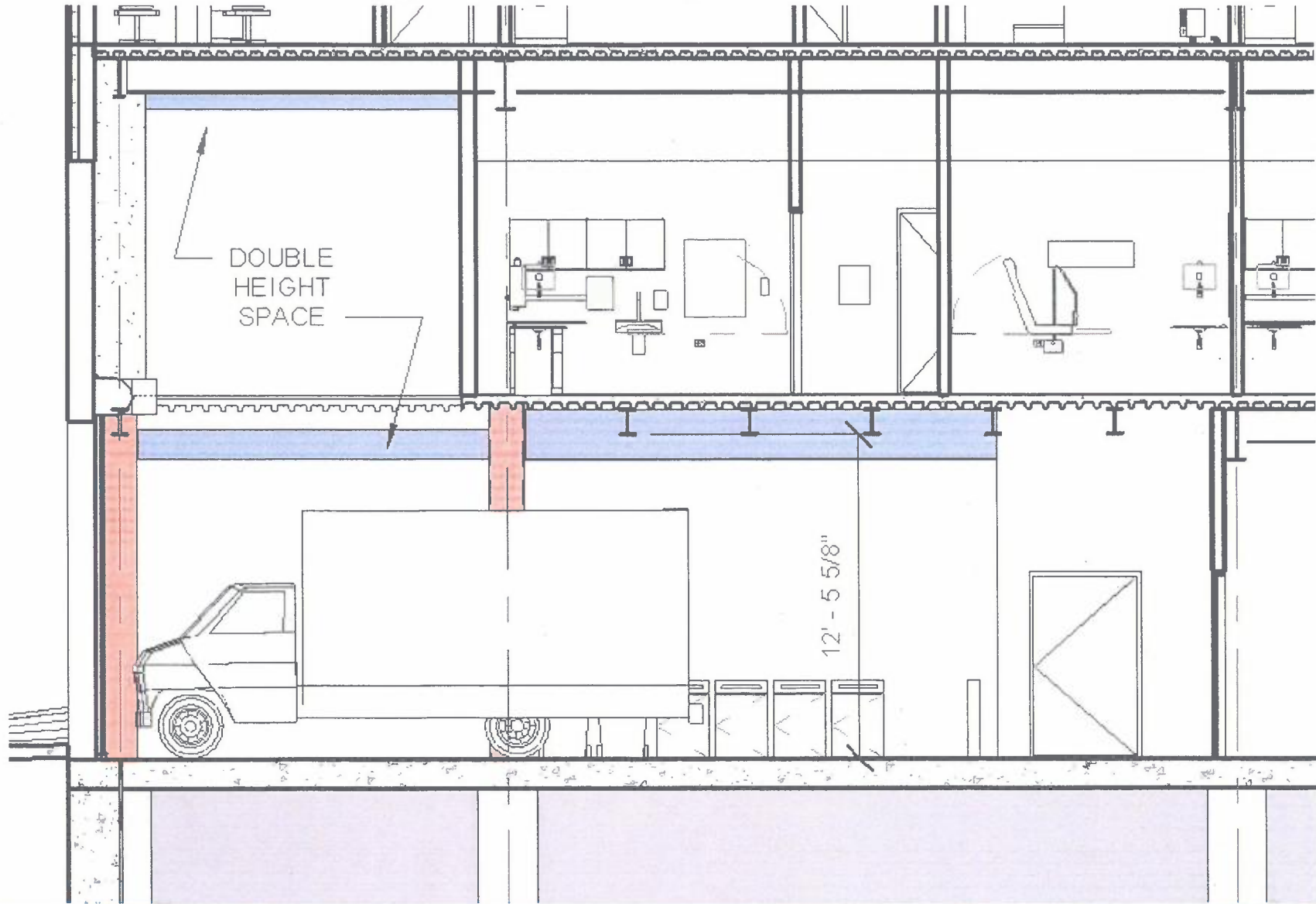


# Baseline Loading Dock Design

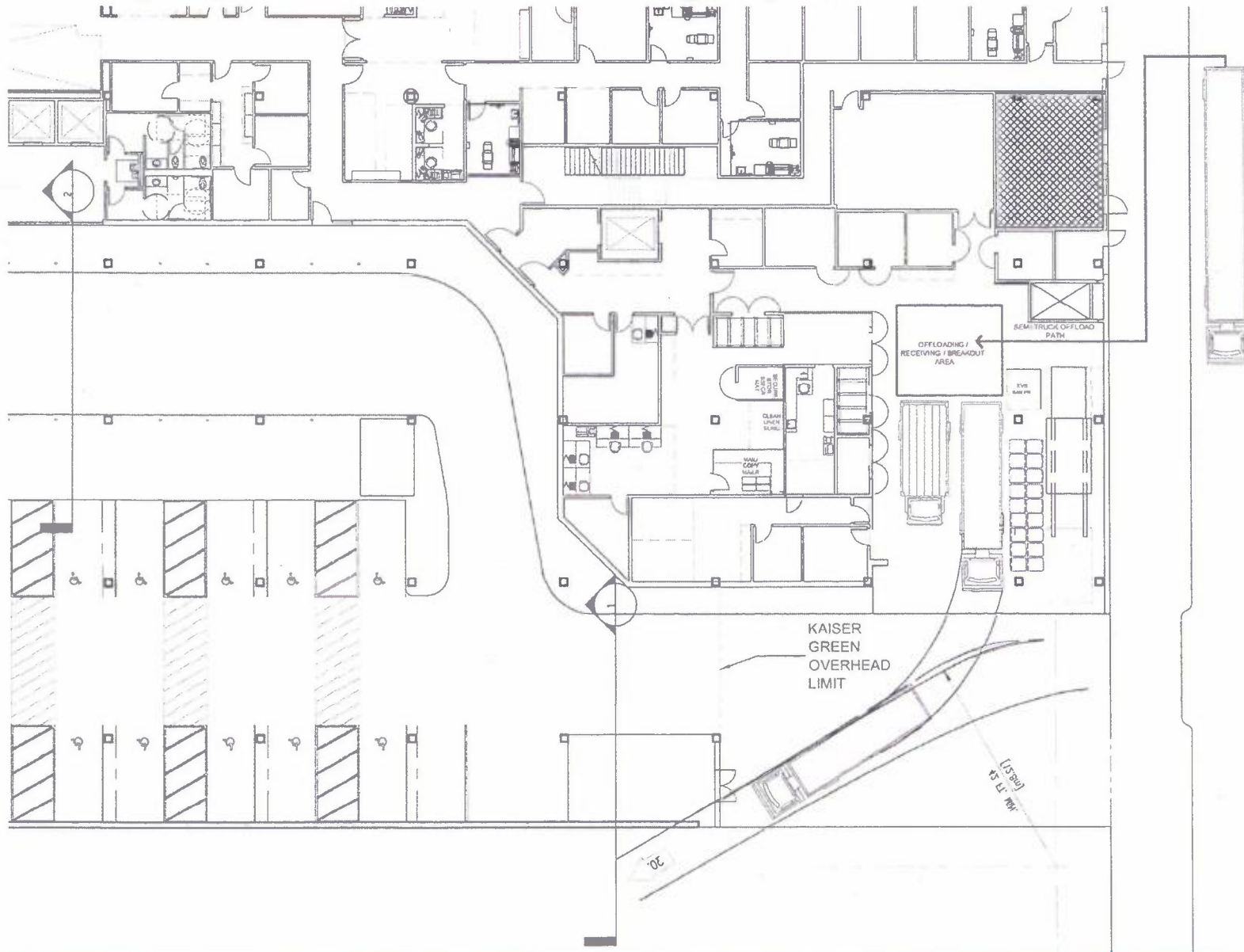




# Baseline Loading Dock Design Section

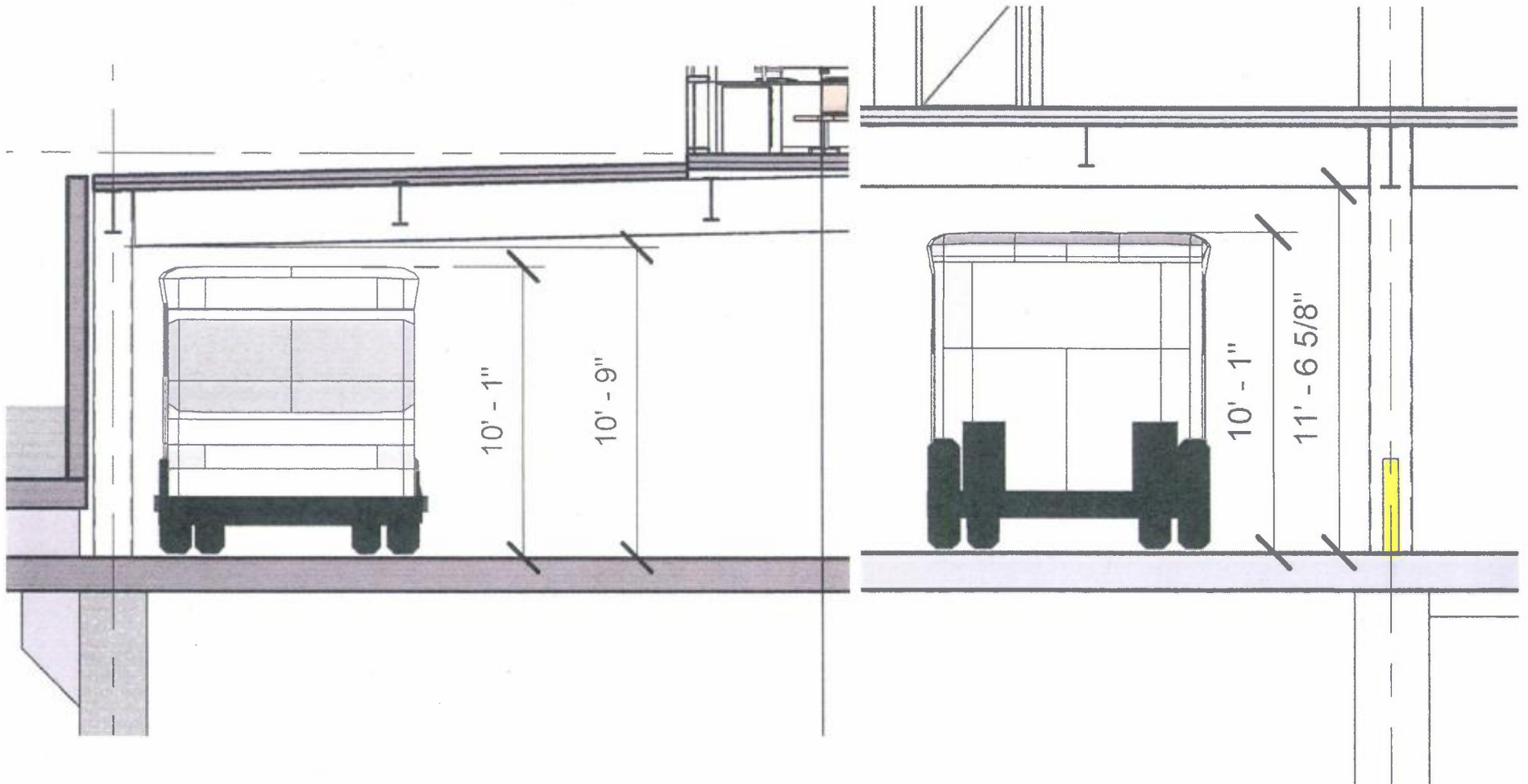


# Loading Dock Internal Loading Option 1





# Garage Overhead Clearance



Section 1 Below KP Green

Section 2 at Drop-Off

# Street Scape Design

